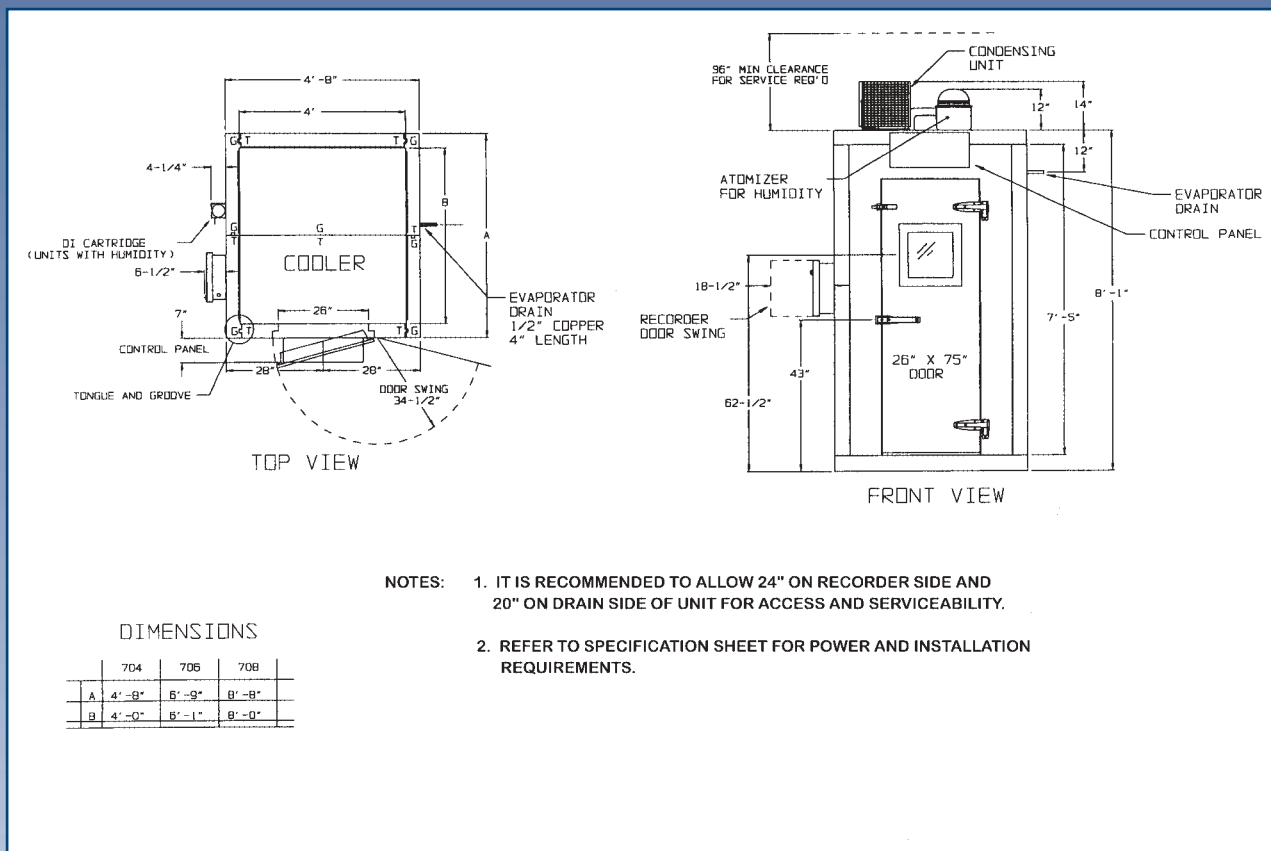


Lab-Line Environmental chambers



Walk-In Environette®



PRODUCT SPECIFICATIONS

Model #	Chamber Dimensions Inches (cm)			Exterior Dimensions Inches (cm)			Shelf Area sq. ft. (sq. m)	Linear Shelf Space ft. (m)	Temperature Stability	Shipping Weight Lb. (kg)
	W	H	D	W	H	D				
704S, 704S-2	48 (122)	82 (208)	50 (127)	56 (142)	107 (272)	58 (147)	56.5 (5)	46 (14)	±0.5°C	1200 (544)
704AS, 704AS-2	48 (122)	82 (208)	50 (127)	56 (142)	107(272)	58 (147)	56.5 (5)	46 (14)	±0.5°C	1550 (703)
706S, 706S-2	48 (122)	82 (208)	73 (185)	56 (142)	107 (272)	81 (205)	75.5 (7)	70 (21)	±0.5°C	1740 (789)
706AS, 706AS-2	48 (122)	82 (208)	73 (185)	56 (142)	107 (272)	81 (205)	75.5 (7)	70 (21)	±0.5°C	2000 (907)
708S, 708S-2	48 (122)	82 (208)	96 (244)	56 (142)	107 (272)	104 (264)	94.5 (8.7)	94 (28.6)	±0.5°C	2200 (998)
708AS, 708AS-2	48 (122)	82 (208)	96 (244)	56 (142)	107 (272)	104 (264)	94.5 (8.7)	94 (28.6)	±0.5°C	2200 (998)

ORDERING INFORMATION AND ACCESSORIES

US List Price

For a quotation, please refer to the Environmental Chamber Questionnaire following the Chamber section on p. 48.